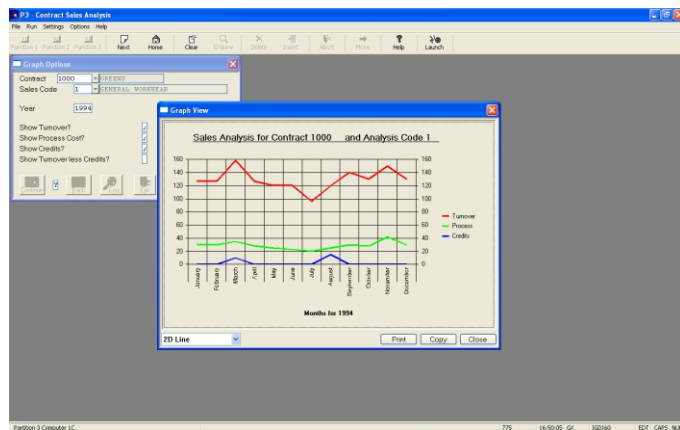
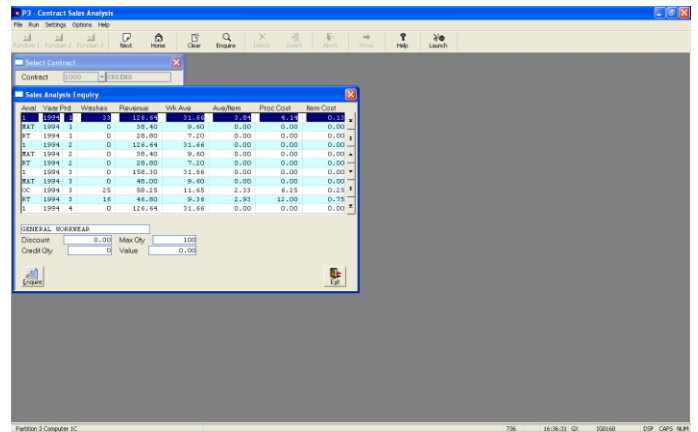


Sales Analysis

The Sales Analysis module collects invoice data from ALL the other Global modules. Statistics are kept for each period, and include the revenue earned; pieces processed; theoretical maximum pieces that could have been processed; plus a process cost. Discounts and credits are also stored.

Each product can be allocated its own specific sales code for revenue analysis. The screen on the right shows the revenue against various analysis codes for a chosen year.

Reports and enquiries are available to enable contract profitability to be monitored at all levels.



The screen on the left shows the data in the form of a graph using a two dimensional line. The graph options enable a number of graphical options to be selected, including 3D bars or lines and pie charts.

The graph shown is for one selected contract, but can be used for ALL contracts. The selection could also limit the graph to a display of data for one specified analysis code.

The graph also shows the process cost for the volume of pieces processed, as well as any credit values that may have been accumulated.

The graph can be printed, or pasted into a Microsoft Word™ document, or (as below) pasted into a Microsoft Excel™ spreadsheet, using the COPY function.

On the right is shown a section of a Microsoft Excel™ Spreadsheet, using the data that was copied from the graph above. Excel can be launched in the normal manner, or from the special 'Launch' button on the graphical tool bar above.

It is then easily possible to auto-sum the columns and to compute the gross profit from the column totals.

Composite spreadsheets can easily be built up by selecting other years and pasting them into the spreadsheet. From there, other standard functions within Excel can be used to produce composite graphs and charts as required.

The Sales Analysis module adds a new dimension to the Global Workwear™ and Global Linen™ products, enabling an almost unlimited degree of analysis to be generated in a variety of formats.

