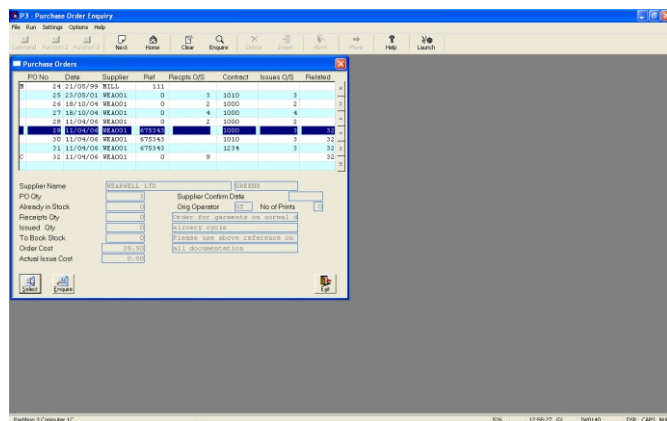
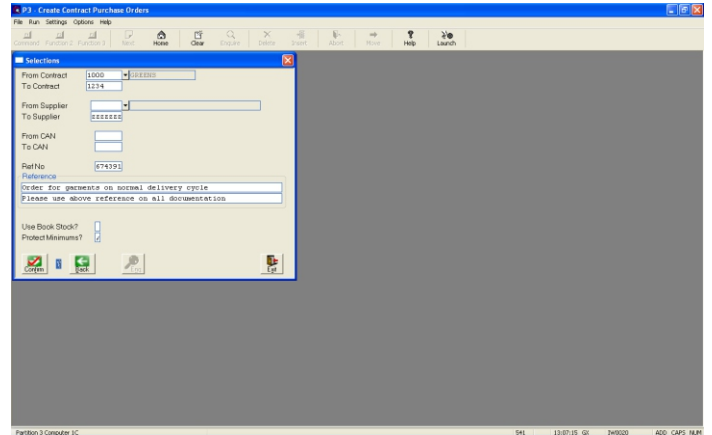


Purchase Ordering

The Purchase Ordering software provides an automatic link between the wearer and garment software and the stock system. When wearers are added to the system, the Just-in-Time (JIT) Ordering module optionally checks available stock before creating a supplier purchase order.

Options within the software enable orders to be combined together for each supplier, reducing the costs of paperwork significantly! Internal database links ensure that combined orders can easily track back to the originating contracts, making life easy in the stores. The screen shot (right) shows the order generation routine for a range of contracts and suppliers. Once this is selected the computer automates everything from that point on.



The screen shot (left) shows individual orders, which relate to the combined order to be sent to the supplier. The nine garments required can then be issued to the correct wearers on each of the contracts displayed.

Should the supplier deliver part orders, the software has all the features in place to handle this situation. It even allows garments to be issued in part sets, if required.

The extract on the right shows that the combined order (32) relates to several internal database orders, including order number 29, and this in turn, shows the wearer who has a requirement for three garments on the order. Once the garments are available in stock they can be semi-automatically Issued and the labels printed. The wearer will then be placed on rental charge as appropriate.

